

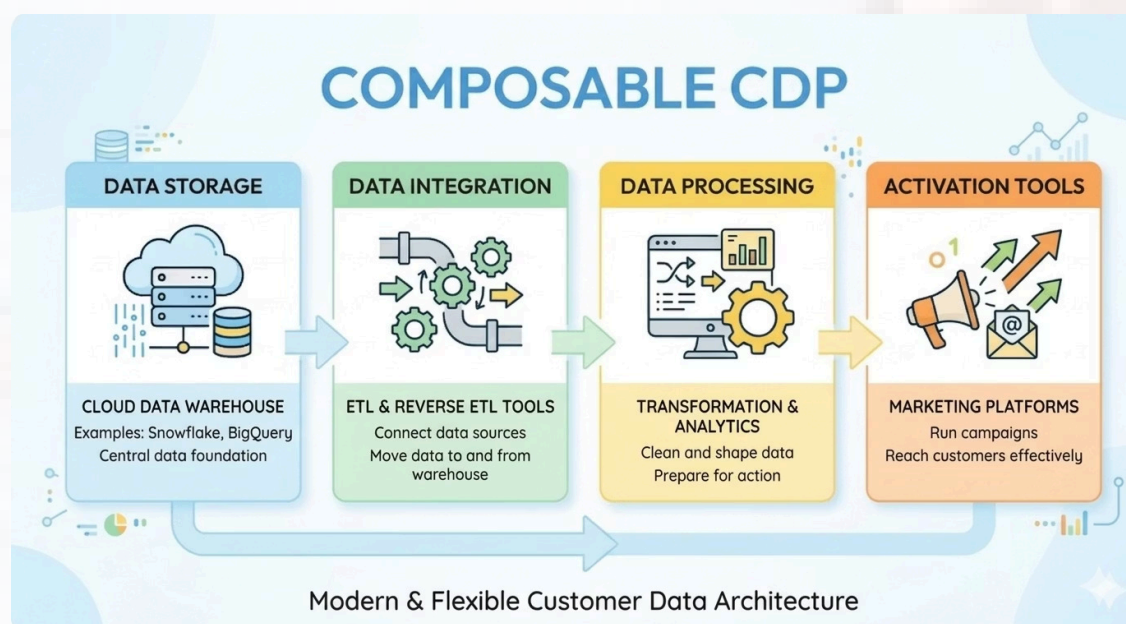
# What is a Composable CDP?

## *A Plain-Language Guide for Marketers*

In today's data-driven world, marketers depend on customer data to deliver personalized experiences, but this data is often scattered across multiple platforms

**A Composable CDP** solves this by offering a flexible, modular approach—allowing businesses to integrate best-in-class tools instead of relying on a single, all-in-one system.

## How a Composable CDP Works



These components are connected through APIs, ensuring smooth data flow across the ecosystem.

## Traditional vs Composable CDP

Aspect	Traditional CDP	Composable CDP
Architecture	Monolithic	Modular
Flexibility	Limited	High
Customization	Predefined features	Fully customizable
Data Ownership	Vendor-controlled	Organization-controlled
Scalability	Moderate	Highly scalable

Dive deeper with [Traditional vs Composable CDP](#), our comprehensive comparison guide.

## Key Benefits for Marketers

A composable CDP provides several strategic advantages:



### 1. Flexibility and Agility

Marketers can modify their technology stack as business requirements evolve, without disrupting existing workflows.



### 4. Cost Efficiency

Businesses only invest in the tools they need, avoiding unnecessary expenses associated with bundled solutions.



### 2. Faster Data Activation

Real-time data integration enables quicker campaign execution and improved responsiveness to customer behavior.



### 3. Enhanced Data Ownership

Organizations maintain full control over their data, ensuring better governance, privacy, and security.

## Role in Modern Marketing

A composable CDP plays a critical role in enabling:

Personalized Experiences

Omnichannel Marketing

Journey Mapping

Real-Time Decisions



By unifying and activating data efficiently, it allows marketers to transition from intuition-based decisions to data-driven strategies.

## Conclusion

A composable CDP transforms how organizations manage customer data by offering a flexible, modular architecture that scales with evolving marketing needs, enabling greater agility, improved data access, and more relevant, timely customer experiences across channels.

**Lemnisk's AI-driven Composable CDP can play a key role in achieving this transformation.** With capabilities such as seamless data integration, real-time customer insights, and advanced campaign orchestration, it supports organizations in adopting a composable approach more efficiently. It enables teams to unify customer data, activate it effectively, and deliver personalized engagement at scale.

[Know More](#)

